



Photo by [Erik Eastman](#) on [Unsplash](#)

## Module 3

### Artificial Intelligence Ethical Issues



# Artificial Intelligence

---

**Artificial intelligence (AI)** is the simulation of human intelligence processes by machines, especially computer systems. These processes include learning (the acquisition of information and rules for using the information), reasoning (using rules to reach approximate or definite conclusions) and self-correction.

Top Nine  
Ethical Issues  
in Artificial  
Intelligence



Issue #1:  
Unemployment:  
What Happens  
After the End of  
Jobs?





Issue  
#2: Inequality:  
How Do We  
Distribute the  
Wealth Created  
by Machines?



Issue #3:  
Humanity: How  
do Machines  
Affect our  
Behavior and  
Interaction?



Issue #4:  
Artificial  
Stupidity: How  
Can We Guard  
Against  
Mistakes?



Issue#5: Racist  
Robots: How  
Do We  
Eliminate AI  
Bias?





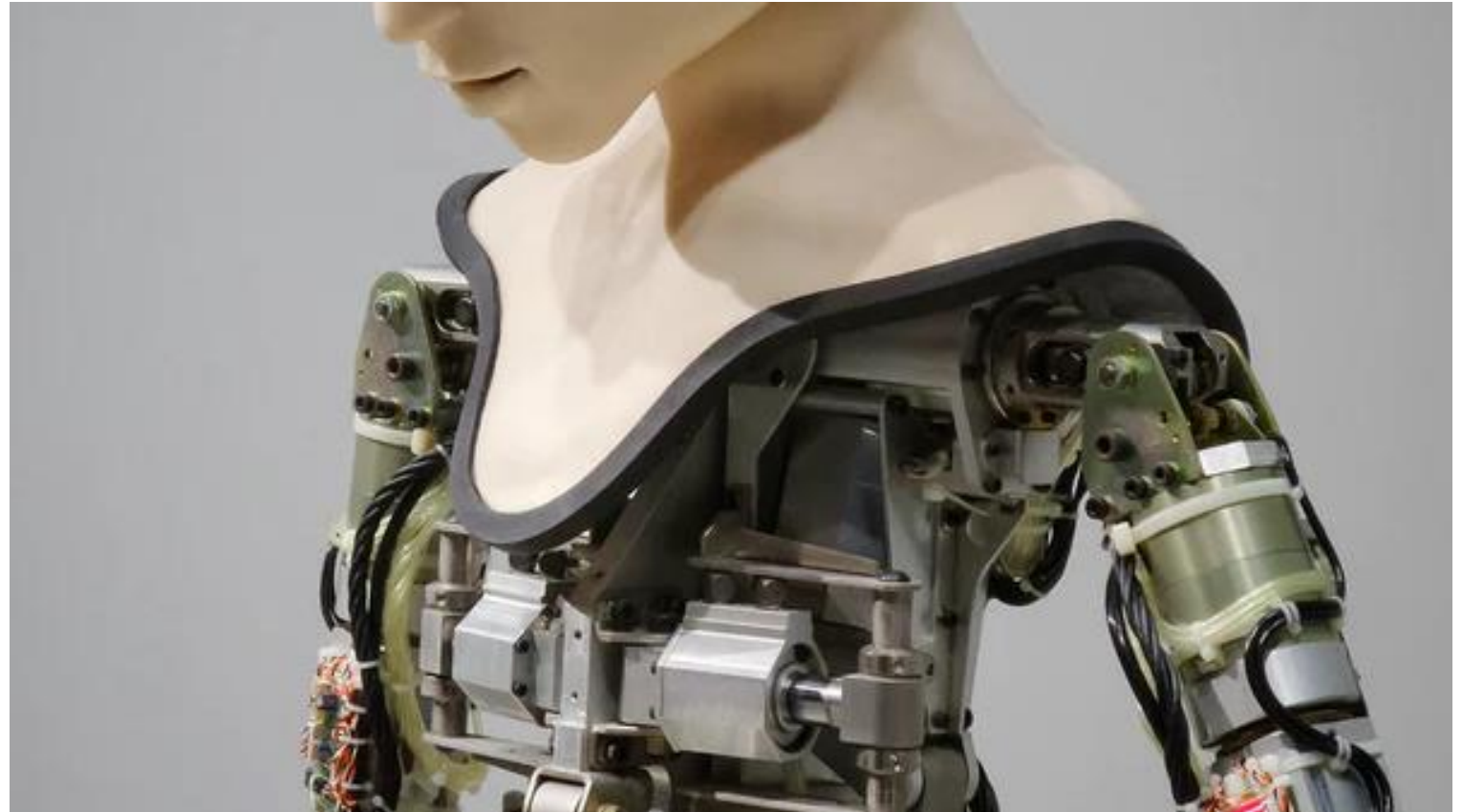
Issue #6:  
Security: How  
Do We Keep  
AI Safe from  
Adversaries?



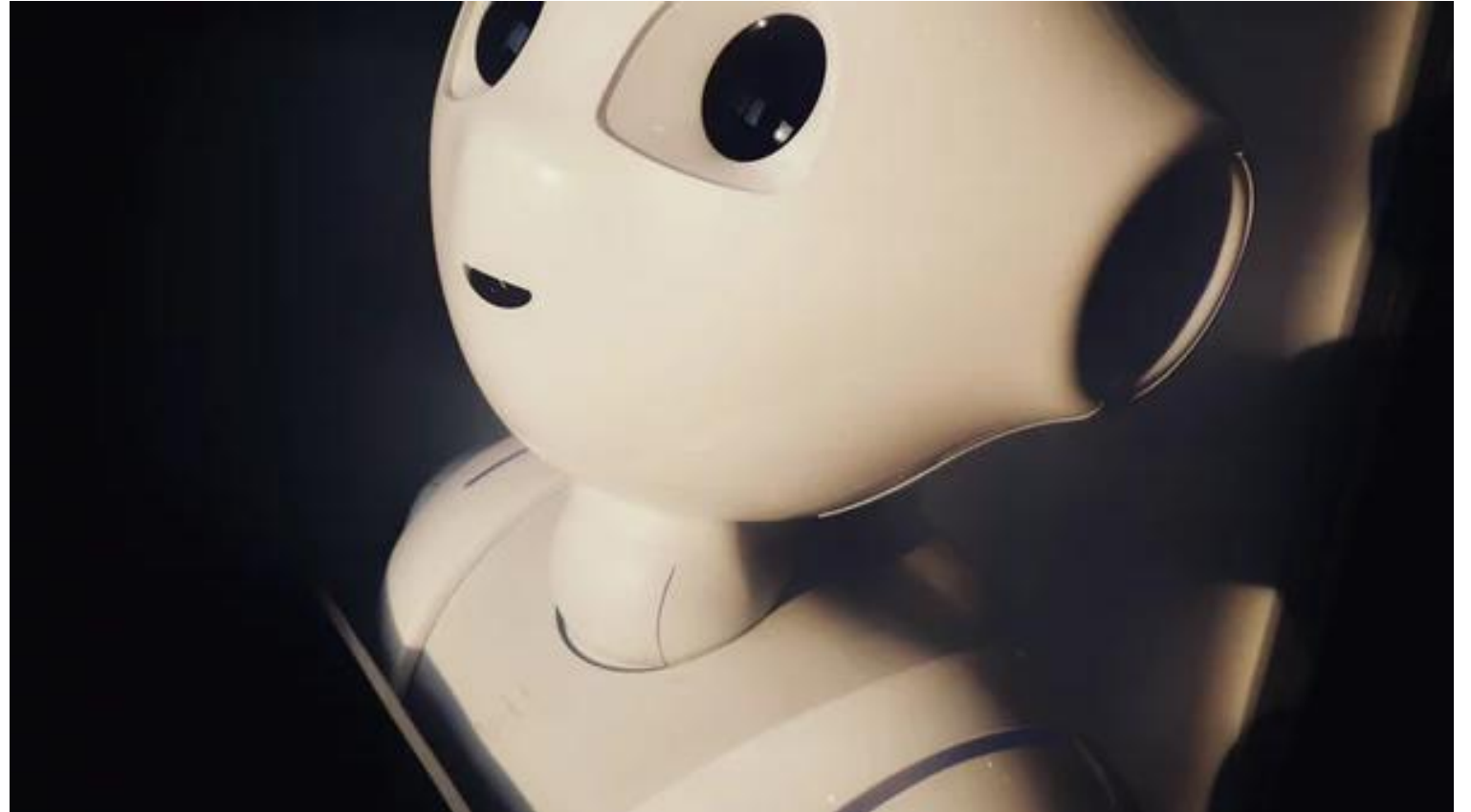
Issue #7: Evil  
Geniuses: How  
Do We Protect  
Against  
Unintended  
Consequences?



Issue #8:  
Singularity: How  
Do We Stay in  
Control of a  
Complex Intelligent  
System?



Issue #9: Robot  
Rights: How Do  
We Define the  
Humane  
Treatment of  
AI?





The End